



Appendix S

Landscape Plan

Tully BESS

SANDY CREEK ROAD, TULLY, 4854

Landscape Plan
Issue : [C]

Prepared by:



Document Control Sheet

Project: Tully BESS
Report Title: Landscape Plan

Authors: Darcy Dunne
Approved by: Philip Kleinschmidt

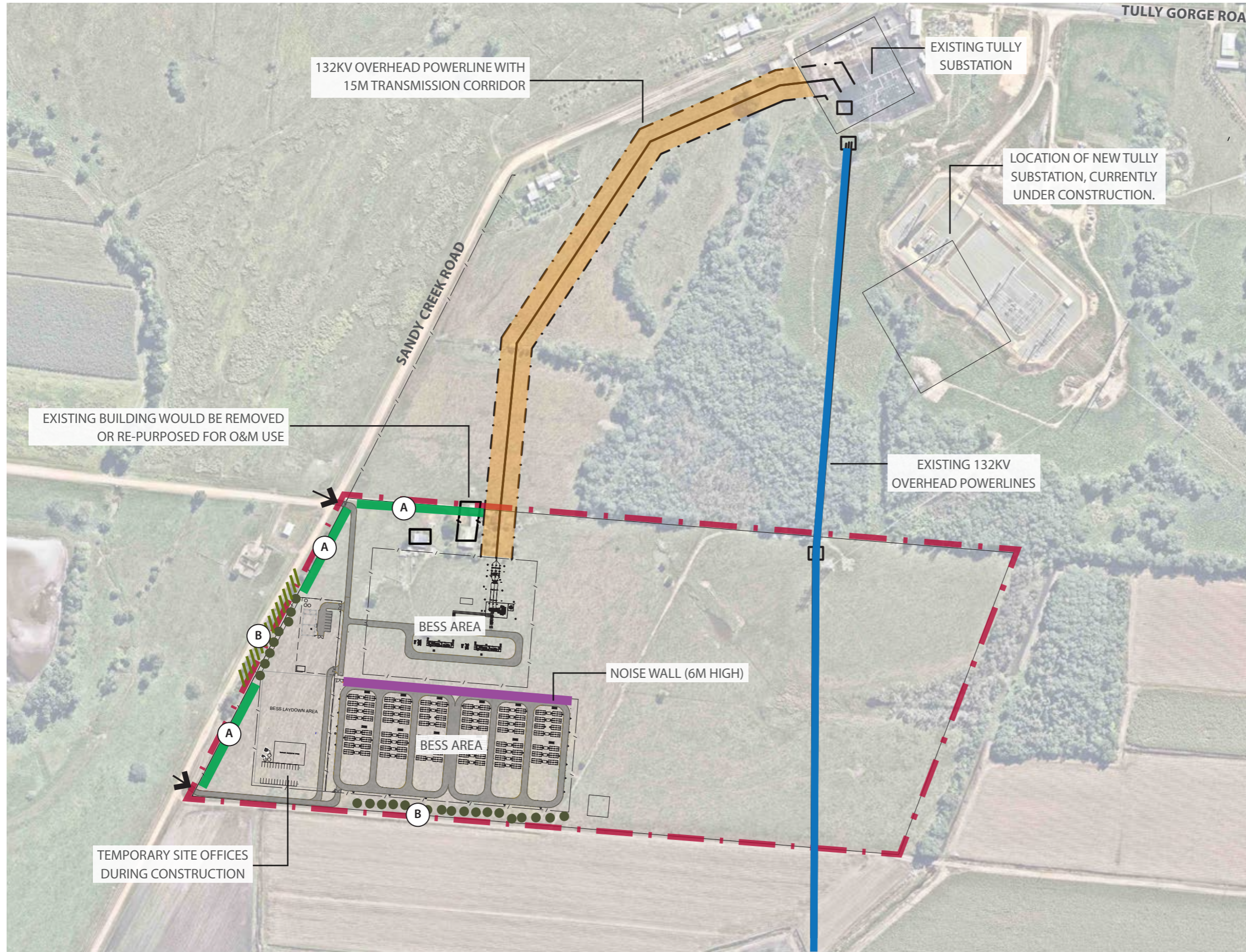
File Location: Z:\Synergy\Projects\25\25117 Tully BESS\03 Working\02 InDesign

Revision	Date	Approved
Rev A	08.09.25	PK
Rev B	10.06.25	PK
Rev C	11.09.25	PK

CUSP acknowledge the Traditional Owners of the lands and waters on which we work. We recognise the deep connection of First Peoples to Country and value their contribution to caring for and managing our lands, waters and seas. We pay our respects to Elders past and present and extend that respect to all First Nations peoples.

This document has been prepared solely for the benefit of Iris Visual Planning and Design and is issued in confidence for the purposes only for which it is supplied. Unauthorised use of this document in any form whatsoever is prohibited. No liability is accepted by CUSP (QLD) Pty Ltd or any employee, contractor, or sub-consultant of this company with respect to its use by any other person. This disclaimer shall apply notwithstanding that the document may be made available to other persons for an application for permission or approval to fulfill a legal obligation.

1.0 Landscape Plan



SITE FEATURES

- SITE BOUNDARY
- ➔ SITE ENTRANCES
- SECURITY FENCE
- INTERNAL ACCESS TRACKS
- EXISTING DWELLINGS
- ▨▨▨▨▨ EXISTING TREES WITHIN ROAD RESERVE

LANDSCAPE TREATMENTS

- A SCREENING VEGETATION (REFER TO TYPICAL SECTION AND PLANT SET OUT DETAIL)
- B SCATTERED TREE PLANTING ALONGSIDE EXISTING ROAD VEGETATION AND SOUTHERN BOUNDARY
DENSITY: SINGLE ROW OF MIXED TREES AT 2M SPACING

2.0 Planting List and Design

PLANT SPECIES

The following plant list uses plant species identified as suitable for Tully in the Cassowary Coast Regional Council Planning Scheme (2015) C6.4 Landscaping and those found in the Bushfire Resilient Building Guidance for Queensland Homes (2020). The list is consistent with the landscape character of the site and its setting.

INDICATIVE PLANT SPECIES LIST

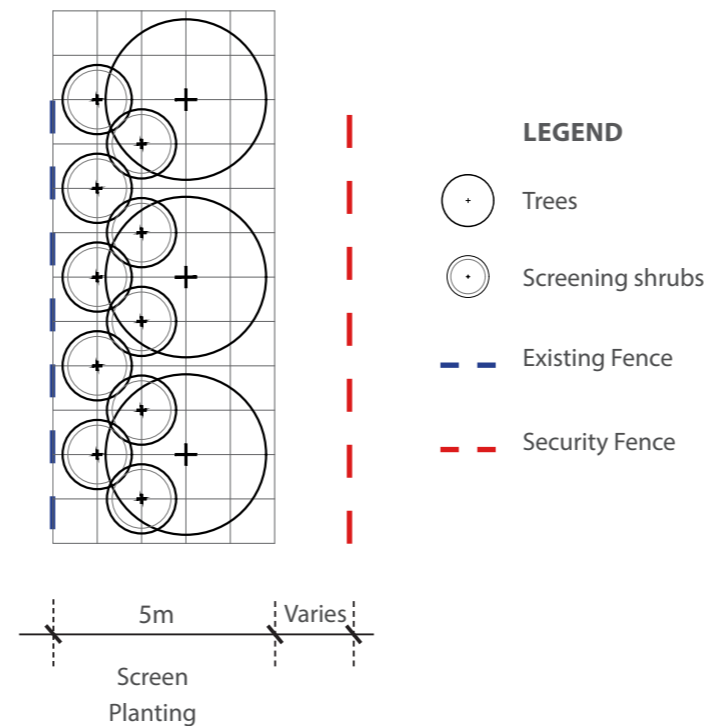
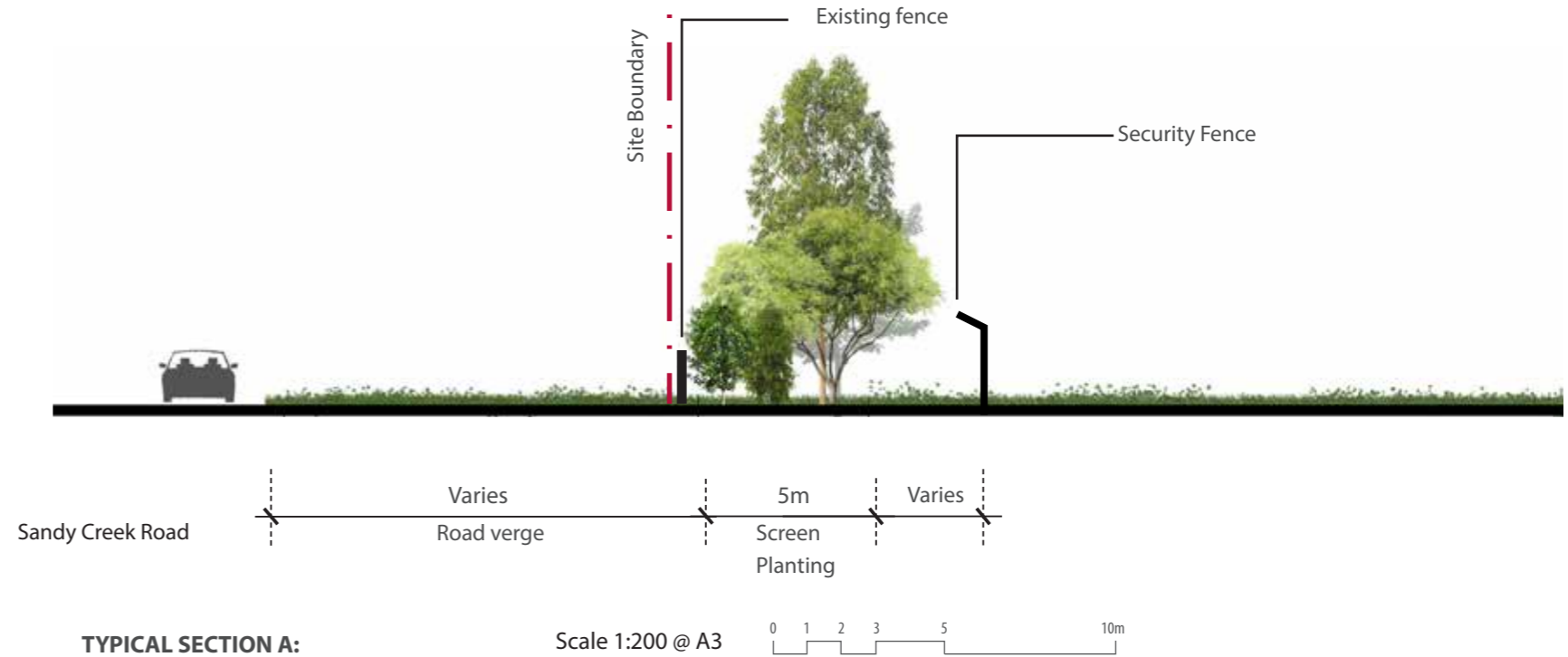
Note: the proposed planting (screening vegetation and scattered trees) to be a random mix of species from this list:

TREES

Scientific Name	Common Name	Height	Canopy Width
<i>Acacia celsa</i>	Brown Salwood	8-20	6
<i>Acacia cincinnata</i>	Circle Fruit Salwood	5-20	6
<i>Acacia flavescens</i>	Yellow Wattle	4-15	6
<i>Acmena hemilampra</i>	Broad Leaf Lilly Pilly	10-20	6
<i>Brachychiton acerifolius</i>	Flame Kurragjong	10-25	8
<i>Buckinghamia celsissima</i>	Ivory Curl Tree	7-10	4
<i>Hymenosporum flavum</i>	Native Frangipani	5-10	4
<i>Lophostemon confertus</i>	Brush Box	10-25	8
<i>Scolopia braunii</i>	Brown Birch	10	3
<i>Stenocarpus sinuatus</i>	Silky Oak	8-20	4
<i>Syzygium australe</i>	Creek Cherry	7-10	5
<i>Syzygium fibrosum</i>	Apricot Satinash	5-10	4
<i>Syzygium luehmanii</i>	Small Leaved Lilly Pilly	10-15	3
<i>Syzygium tierneyanum</i>	River Cherry	10	8

SHRUBS

Scientific Name	Common Name	Height	Spread
<i>Canthium coprosmoides</i> <i>syn. Cyclophyllum coprosmoides</i>	Supplejack	5	3
<i>Eugenia reinwardtiana</i>	Cedar Bay Cherry	2-5	3
<i>Gardenia scarella</i>	Native Gardenia	2-5	2
<i>Grevillea cultivars</i>		1-4	2
<i>Lomandra longifolia</i>	Basket Grass	1	1
<i>Petalostigma pubescens</i>	Quinine Bush	3-5	2
<i>Syzygium 'Cascade'</i>	Cascade Lilly Pilly	2-5	4
<i>Xanthostemon verticillatus</i>	Bloomfield Penda	6	4



SCREENING VEGETATION: TYPICAL PLANT SET OUT DETAIL

Trees and shrubs will be staggered to maximise the screening effect as per the following diagram.

3.0 Planting Notes

PLANTING NOTES

- Planting area to be slashed and sprayed with a knock-down herbicide..
- Plants shall be tube stock. Plants shall be vigorous, well established, of good form, not soft or forced, free from disease and insect pests. They shall have large healthy root systems, not root bound and all trees with a single leading shoot appropriate to their natural form. All plants are sun hardened to the site climatic conditions.
- Controlled / slow-release fertilizer, minimum 6 month, shall be placed in each planting hole at the time of planting in accordance with the manufacturer's application rate
- Plants shall be installed with a biodegradable 'tree guard' (Grow tube) or similar. Nom 450mm high, staked in accordance with the manufacturer's written recommendations.
- Mulch shall be 100mm thick well composted organic mulch (to hold moisture and suppress weeds.
- Actively maintain the planting during 12 week establishment period, followed by a 21 month monitoring period (total of 24 months)

Activities during establishment and monitoring periods shall include:

- o Maintaining moisture levels to prevent plants from drying out and to provide optimum conditions for plant establishment and growth.
- o Managing weed infestations. Weed control preferably by hand removal or by registered application of herbicide.
- o Replacing dead and missing plants with identical species. If a particular plant species has a high mortality rate consideration may be given to a substitution of a more suitable plant species.
- o Replacing damaged or missing tree guards and ensure that trees and guards are secure to their stakes.
- o Removing tree guards when the plants are established
- o Provide slow-release fertilizing (3–6 month) of plant material suffering discoloration by placing fertiliser around plant stem or use spiking method to reduce surface weed growth.
- o Monitor all plants for health and disease. Where necessary seek written recommendations from a suitably qualified horticulturalist and implement accordingly.

