

Theodore Wind Farm

Newsletter
Edition 4, July 2025

RWE Renewables Australia has secured state planning approval for the proposed Theodore Wind Farm.

The project received Development Application (DA) approval from Queensland's State Assessment and Referral Agency on 20 June, 2025. This is a major milestone for the project and takes the project a step closer to the planned commencement of construction in late 2026.

We will now continue to work through the Federal Government's Environment Protection and Biodiversity Conservation (EPBC) Act referral process. The EPBC process focuses on environmental impacts from major projects and identifies ways to mitigate and offset these.

While our EPBC referral has already been publicly advertised, the Public Environment Report (PER) component of the EPBC will be advertised by the Department of Climate Change, Energy, the Environment and Water (DCCEEW) at a date to be determined, but most likely later this year. An outcome on the EPBC is expected early next year.

From now until then we will continue to work through a variety of work streams, including our:

- Neighbour shared benefits program
- Local procurement plan (expected to be released late this year)
- \$17.5m Community Benefit Fund (including the guidelines for a community committee to administer the fund).

There will also be continued community engagement – including more community drop-in sessions in early August, which you can read about on page four of this newsletter – and our sponsorship fund will remain open during this time.

Kind regards,

Matt Walker

Development Manager – Theodore Wind Farm

At a glance



Up to **170 wind turbines** with a tip height of up to 270m



Located about 22km east of Theodore, 50km south-west of Biloela and 150km south-west of Gladstone



Planned capacity of about **1GW**



About **500,000 Queensland homes** powered



240MW Battery Energy Storage System (BESS)



Project status: Planning and approvals (DA received)



Start of **construction** planned for late 2026. Estimated 3-4 year construction period

RWE Renewables Australia respectfully acknowledges the Wulli Wulli people, the Traditional Owners of the lands where the Theodore Wind Farm is proposed, and pay our respect to their Elders, past, present and emerging.

Find out more



1800 879 435



theodorewindfarm@rwe.com



Call into a community drop-in session:
see back page of this newsletter

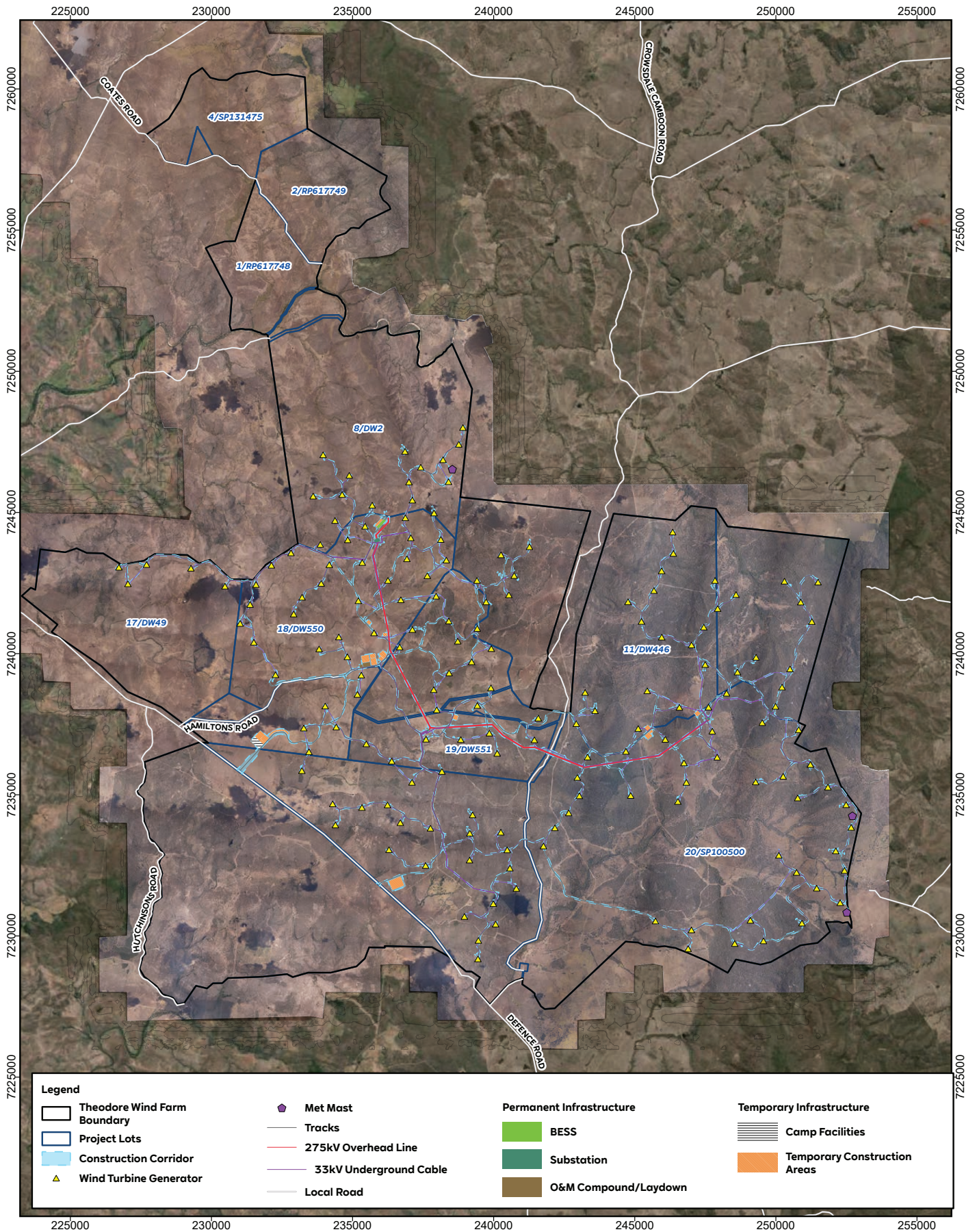


Scan the QR code to
Join our mailing list

Theodore
Wind Farm

RWE

theodorewindfarm.com.au



DISCLAIMER/COPYRIGHT:
The information contained within this document is the copyright of RWE Renewables Australia.
Use or copying of this document (either in whole or part thereof), without the written consent of RWE Renewables Australia
constitutes an infringement of copyright. RWE Renewables Australia accepts no liability for any loss
(caused or arising from reliance upon information presented herein.
DATA SOURCES: Queensland State Government Road Mapping, Cadastre, all
Environmental, Vegetation and Biomass. RWE Renewables Australia all other data.
Note: This plan is not for construction, for information purposes only.

Theodore Energy Development Pty Ltd: Theodore Wind Farm

Proposed Footprint - Overview

0 6 Km N
GDA2020 MGA Zone 56
Produced By: MW
Reviewed By: JP
9/06/2025 THWF_PLAN_003A_Rev05

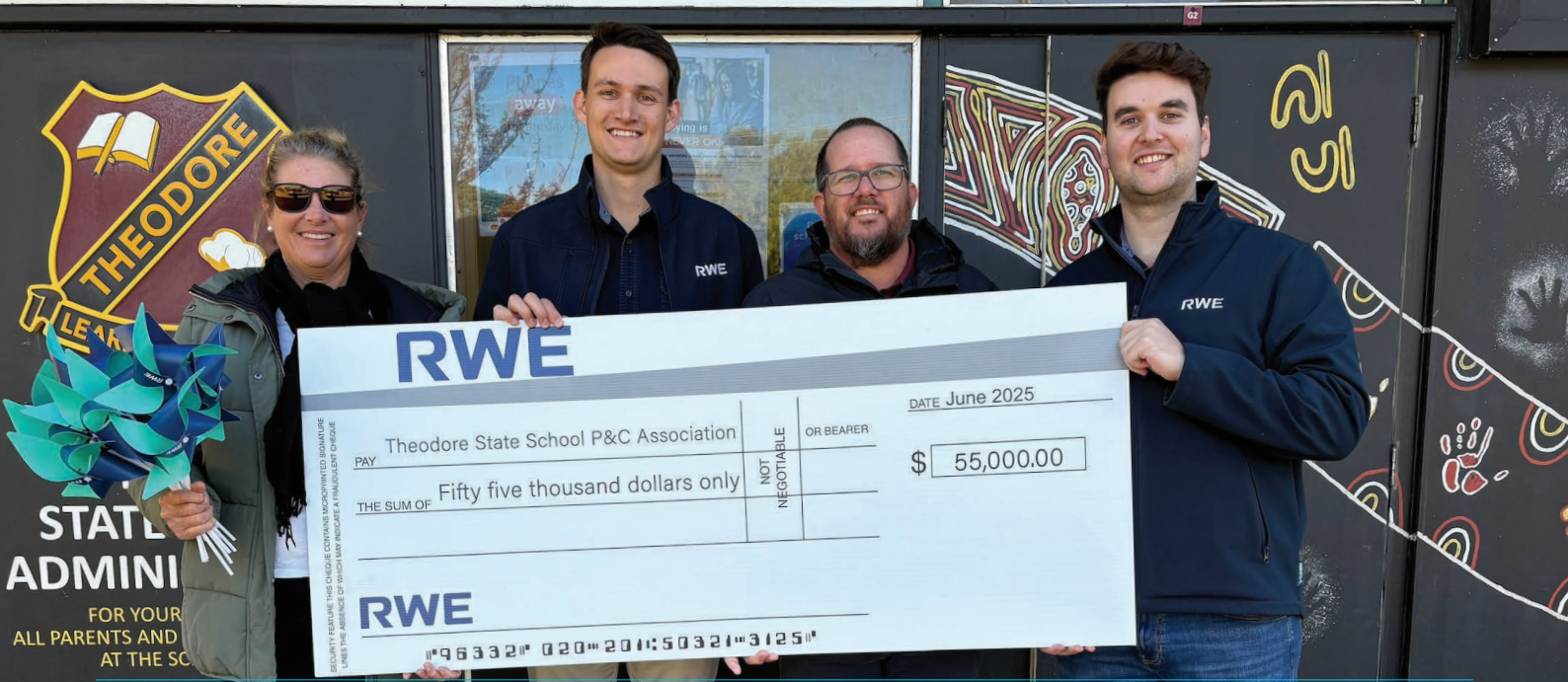


Image: Theodore State School President, Michelle Hardwick (left) and Principal, Dan Williamson (second right) receive a \$55,000 grant from RWE's Matt Walker and Jack Petrakis.

Supporting your community

We are proud to let you know that our sponsorship fund of \$100,000 per calendar year during the planning and approvals phase has already contributed more than **\$160,000** to your local community. This includes:

2025

\$5,097	Theodore Council on the Ageing
\$10,000	Theodore Bulls N Barrels Bonanza
\$5,220	Theodore and District Pony Club Youth Camp
\$5,000	Spurs and Spindles Campdraft
\$5,600	Theodore Show Society Women's Campdraft Clinic
\$3,500	Theodore Show Society Showjumping
\$6,000	Theodore Touch Association
\$4,510	Theodore Junior Roosters Rugby Club
\$5,000	Theodore Trail Ride
\$5,000	Australian Stock Horse Society First Aid Training
\$2,500	Theodore Community Link Winter Fun Run
\$7,581	Moura Marlins

2024

\$55,000	Theodore State School P&C Multipurpose Courts
\$5,000	Theodore Junior Roosters Rugby League Club
\$5,000	Theodore Centenary Celebrations
\$5,000	Trail Ride
\$5,000	Camboon Campdraft
\$5,000	Theodore Show
\$5,000	Banana Race Day Auction
\$4,500	Theodore Musuem
\$3,000	Bulls N Barrels Bonanza
\$3,000	Moura Marlins

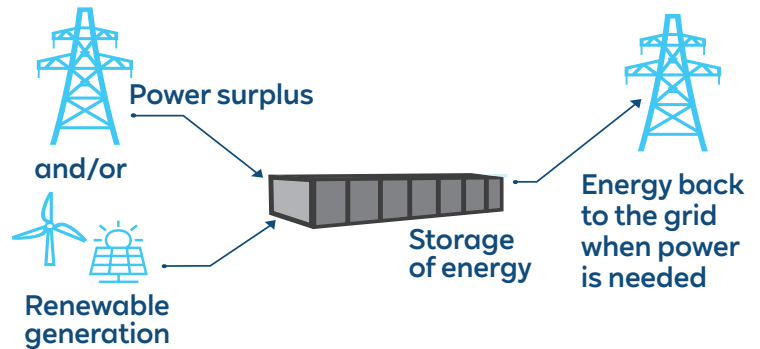
This year we have contributed \$65,000 to date.

We are continuing to take applications and speak to local community groups about their needs.

The BESS

The Theodore Wind Farm's Battery Energy Storage System (BESS) will have a planned capacity of 240 megawatts. It will be located near the substation in the northern area of the site – you can see it on the map on page 2.

Battery systems store and release electricity. They support grid stability, storing energy during periods of favourable weather conditions and low demand and releasing it during demand peaks, as well as heat waves and emergencies. This helps to improve the electricity network's reliability.



Engaging with you

Join us!

If you are a community group, business or other organisation who would like a project briefing or meeting, please reach out to us on 1800 879 435 or email theodorewindfarm@rwe.com. Alternatively, please call in to see us at our community drop-in sessions.

Since 2022, in addition to personal meetings, briefings and other communications we held:



6 community drop-in sessions with technical experts available to provide expert insights

Held across two consecutive days at Theodore and Banana in August 2023, February 2024 and March 2025.



8 shopfronts where team members were on hand to answer questions and share information

Held at the Theodore RSL Hall during March, April, May and June 2024.



10 open café sessions where people could drop in for a coffee and learn more about the project

Held at Theodore in October and November 2024, as well as May, June and July 2025.

Community drop-in sessions

Would you like to know more about the proposed Theodore Wind Farm?

The project now has state planning approval and we would like to share with you the most up-to-date information on the proposal, as well as what happens next.

What will be available?

- The project layout
- DA approval and the conditions that RWE has to fulfil as part of the approval
- Detailed studies that went into the DA
- Sponsorship information
- Next steps

THEODORE
RSL Hall
30 The Boulevard,
Theodore
Wednesday,
6 August 2025
8.30am to 4pm

BANANA
Sutherland Hall
32 Bowen Street,
Banana
Thursday,
7 August 2025
8.30am to 1pm

Find out more



1800 879 435



theodorewindfarm@rwe.com



Call into a community drop-in session



Scan the QR code to
Join our mailing list

Theodore
Wind Farm

RWE

theodorewindfarm.com.au