

Theodore Wind Farm

Newsletter
Edition 3, March 2025

Photomontage of view from Defence Road

RWE Renewables Australia is continuing to work on developing a wind farm project near Theodore, in the Banana Shire, about 22 kilometres east of Theodore and 50 kilometres south-west of Biloela.

The Development Application (DA) for the proposed project was submitted to the state government in September last year. In January the government issued a four-month pause on consideration of the Project's DA. RWE remains confident in the quality and compliance of our submission and we are actively working with the Queensland Minister and the Department of State Development, Infrastructure and Planning to provide further detail on the project. We believe the proposed Theodore Wind Farm is a quality project and will continue to develop and invest in the project in line with our current timeframes.

Our sponsorship fund remains open and we continue to be committed to ongoing engagement. We are regularly out and about in your community, meeting with individuals and organisations. We invite community groups and eligible organisations who may benefit from our existing \$100,000 per annum sponsorship fund to make contact so we can support your community.

We have Community drop-in sessions scheduled for later this month, and open café sessions in May, June and July. We invite you to stay engaged by liaising with the project team directly or via these opportunities, which are outlined in more detail on page four of this newsletter. We value your input and look forward to continuing to work together to ensure the proposed Theodore Wind Farm delivers lasting benefits to your community.

Kind regards,


Matt Walker


Development Manager –Theodore Wind Farm

RWE Renewables Australia respectfully acknowledges the Wulli Wulli people, the Traditional Owners of the lands where the Theodore Wind Farm is proposed, and pay our respect to their Elders, past, present and emerging.

At a glance

 Up to 170 *wind turbines* with a tip height of up to 270m

 *Located* about 22km east of Theodore, 50km south-west of Biloela and 150km south-west of Gladstone. The area is predominantly used for cattle grazing


 Site investigation area of about *46,000* hectares, with an expected operating footprint of less than 3% of this land

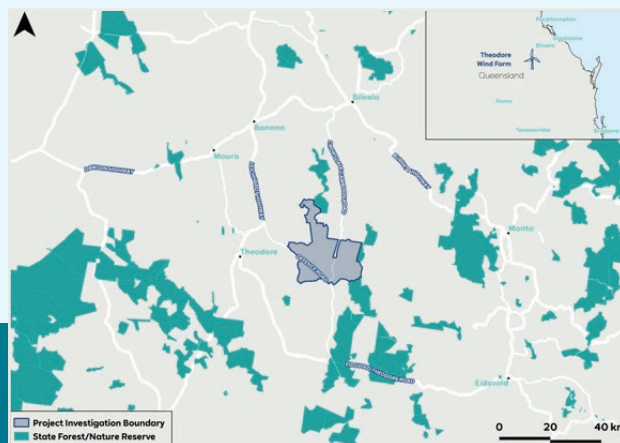
 *Installed capacity* of about 1,100 megawatts (MW)

 About *500,000 Queensland homes* powered

 *Project status:* Planning and approvals

 Start of *construction* planned for 2026
Estimated 3-4 year construction period

 Targeting 2027 for initial *operations*
Expected to be fully operational in 2029



Find out more

 1800 879 435

 theodorewindfarm@rwe.com

 Drop into an open cafe session:
see back page of this newsletter



Scan the QR code to
Join our mailing list

Theodore
Wind Farm

RWE

theodorewindfarm.com.au

What we've heard from you

Frequently asked questions and answers

Will local businesses and employees be engaged during development?

RWE is committed to prioritising the use of regional Queensland businesses and employees when practical for the project and local community. If the project is approved, construction is expected to take up to four years and require a workforce of up to 500 people at peak periods. In addition to this construction workforce, there will be substantial additional economic benefits for the local area. As the project progresses throughout the planning and approvals phase, we will create a register on the Theodore Wind Farm project site to enable expressions of interest for provision of goods and/or services and provide further information on how you can be involved. We are currently going through the process of developing local and Indigenous procurement plans. We will also hold supplier specific information sessions at a later date, where interested goods and service providers will be able to meet with our construction contractors.

How will RWE manage accommodation for construction workers?

RWE has identified the need to provide accommodation for workers involved in the construction, operation and decommissioning of the proposed Theodore Wind Farm. Up to 500 workers will be required during peak construction periods, and some of these workers will be sourced from outside the Banana Shire Local Government Area.

RWE commissioned a study into potential accommodation options and is now working with Banana Shire Council on the best options for accommodating the workforce. To date the preferred option under discussion is primarily on-site camp during construction along with utilisation of local accommodation providers.

RWE has also committed to working with council to develop in-town permanent accommodation. The format, location and quantity is yet to be determined.

We will share further information as it becomes available.

Will the wind turbines generate noise?

Wind farm developments generate noise, like many other built and natural environments. Wind farms in Queensland must currently comply with the noise guidelines in State code 23: wind farm development. This code provides two acoustic assessment criteria: one for host landholders and a second for dwellings not involved in the project. The project must have a 1.5 kilometre buffer to dwellings, and all neighbouring dwellings are well beyond this distance. Although not required due to the project's distance from dwellings, RWE has conducted background noise monitoring and modelling at 11 host and non-host sites at and near the area as part of our commitment to best practice.

What impact will the wind farm have on aviation in the area?

Aviation is an important consideration when developing a wind farm. RWE is aware of the existing aviation in the Theodore area, including aerial mustering. An aviation impact assessment has been completed and indicates the proposed wind farm will have minimal impact on aviation in the area. The current indicative turbine layout also satisfies the aviation planning provisions of Banana Shire Council. The proposed project is more than 20 kilometres from Theodore Airport and initial studies have indicated the wind farm would not compromise the safety of existing airports and associated navigation and communication facilities. If the wind farm is constructed, we will work with the project's landowners to plan when turbines will need to be turned off for aerial mustering. RWE will share met mast and turbine locations with local pilots and aviation businesses on request, as the project progresses.

What is RWE doing to minimise and offset biodiversity impacts?

RWE has undertaken significant flora and fauna studies as part of the project and these reports are available on the SARA and EPBC portals. RWE is committed to conducting best practice assessment of the environment. As part of this we have:

- Completed more than two years of ecological site surveys across a range of seasons
- Prepared draft post construction rehabilitation plans that were submitted as part of the DA, and will be refined through the planning process
- Committed to end of life decommissioning.

Has a landscape and visual assessment been undertaken?

A landscape and visual impact assessment has been completed with photomontages from points around the Project site showing minimal visual impact from publicly accessible locations. Photomontages have been shared at our community drop-in sessions and will be available at future sessions. These photomontages are also viewable as part of the DA application on the SARA portal: www.planning.qld.gov.au/planning-framework/state-assessment-and-referral-agency/sara-application-material.

Photomontage of view from Defence Road





Almost

\$100K already allocated

Sponsorship distributed to date includes:

\$55,000	Theodore State School Multipurpose Courts
\$5,097	Theodore Council on the Ageing
\$5,000	Theodore Junior Roosters Rugby League Club
\$5,000	Theodore Show
\$5,000	Theodore Centenary Celebrations
\$5,000	Theodore State School P&C
\$5,000	Camboon Campdraft
\$3,000	Moura Marlins Swimming Club
\$3,000	Theodore Museum
\$3,000	Bulls N Barrels Bonanza

Our sponsorship fund

We are proud that our sponsorship fund of \$100,000 per calendar year during the planning and approvals phase of the project has already contributed close to \$100,000 to local community groups and organisations.

Apply for Community Sponsorship

If you are part of a community or non-profit group, we want to hear from you. We are meeting with community groups to understand their needs and welcome your feedback.

If your group could benefit from sponsorship, please contact the team to arrange a meeting on:

 **1800 879 435**

 **theodorewindfarm@rwe.com**



How to apply

If you would like to apply for sponsorship, scan the QR code and download the application form from the website, or visit au.rwe.com/projects/theodore-wind-farm.



Have your say on the Community Benefit Fund

RWE will establish a Community Benefit Fund of at least \$500,000 per year – equating to about \$17.5 million across the operational life of the wind farm – once the project moves into the construction phase.

This fund will be administered by a local community committee, that will be responsible for deciding how the money is spent.

In other communities, funds have supported initiatives including new uniforms for sporting clubs, through to medical equipment for rural hospitals.

We want to hear your suggestions about how this fund can make a positive difference to your community.

To have your say, contact the team or drop into an open cafe session, as outlined on the back page of this newsletter.

Engaging with you

If you are a community group, business or other organisation who would like a project briefing or meeting, please reach out to us on 1800 879 435 or email theodorewindfarm@rwe.com. Alternatively, please call in to see us at our community drop-in and open café sessions, as detailed below.

Throughout 2023 and 2024, in addition to personal meetings, briefings and other communications we held:



4 community drop-in sessions

with technical experts available to provide expert insights

Held across two consecutive days at Theodore and Banana in August 2023 and February 2024.

More sessions planned for 2025.



8 shopfronts

where team members were on hand to answer questions and share information

Held at the Theodore RSL Hall during March, April, May and June 2024.



4 open café sessions

where people could drop in for a coffee and learn more about the project

Held at Theodore in October and November 2024.

More sessions scheduled for 2025.

Join us!

Community drop-in sessions

Would you like to know more about the proposed Theodore Wind Farm? We are holding community drop-in sessions in March and invite you to drop in to see us at:



THEODORE RSL Hall

30 The Boulevard, Theodore
Friday, 28 March 2025
8am to 4pm



BANANA Sutherland Hall

32 Bowen St. Banana
Saturday, 29 March 2025
8am to 4pm

Wind farm open café sessions

Call into an open café session in Theodore, where you can chat with our team members over a coffee and learn more about the proposed Theodore Wind Farm.

Tuesday, 13 May
12:30pm to 4.30pm
Theodore Home & Garden Cafe

Wednesday, 14 May
8:30am to 12 noon
Castle Creek Cafe

Tuesday, 10 June
12:30pm to 4.30pm
Theodore Home & Garden Cafe

Wednesday, 11 June
8:30am to 12 noon
Castle Creek Cafe

Tuesday, 8 July
12:30pm to 4.30pm
Theodore Home & Garden Cafe

Wednesday, 9 July
8:30am to 12 noon
Castle Creek Cafe

Find out more



1800 879 435



theodorewindfarm@rwe.com



Drop into an open café session:
[see back page of this newsletter](#)



Scan the QR code to
Join our mailing list

Theodore
Wind Farm

RWE

theodorewindfarm.com.au