

Cattle Creek Wind Farm

Newsletter
Edition 3, July 2025

RWE Renewables Australia is continuing to work on developing a wind farm and associated battery storage at Cattle Creek, near Dunmore.

Since our last update in March, we have held another round of community drop-in sessions at the Cecil Plains Golf Club and continued working on the specialist studies required as part of the planning process.

I am the new project lead for the proposed Cattle Creek Wind Farm, Derek Haas. I am very excited to have joined the team at RWE as a Senior Development Manager and will lead the development of this proposed project.

I have more than 20 years' experience developing major projects, with 10 years in renewables, and have worked on wind and solar projects throughout Queensland, New South Wales and Victoria.

I am passionate about supporting growth in regional Queensland through local business engagement and career opportunities so that young families can stay. I value sincere community engagement, responsible development and working with project communities to build a legacy of benefits for generations. I believe major projects have a unique opportunity to support the growth of regional communities and look forward to supporting your community through the development of the proposed Cattle Creek Wind Farm.

One of the first initiatives I am leading as part of the project development is the Social Impact Assessment. This is your opportunity to provide local perspective on your community and we would value your input. You can read more on page 4 of this newsletter.

As always, if you have any queries, please don't hesitate to reach out via our toll free number or email.

Derek Haas

Project Lead – Cattle Creek Wind Farm

RWE Renewables Australia respectfully acknowledges the Bigambul people, the Traditional Owners of the lands where the Cattle Creek Wind Farm is proposed, and pay our respect to their Elders, past, present and emerging.

Find out more

1800 867 077

cattlecreekwindfarm@rwe.com



Scan the QR code to
Join our mailing list

At a glance



About **140 wind turbines** with a tip height of up to 270m



Estimated **250MW Battery Energy Storage System (BESS)**



Located about 50km north-west of Millmerran. The area is predominantly used for cattle grazing



Site investigation area of about **20,000 hectares**, with an expected operating footprint of less than 5% of this land



Installed capacity of about **1,000 megawatts (MW)**



More than **525,000 Queensland homes powered**



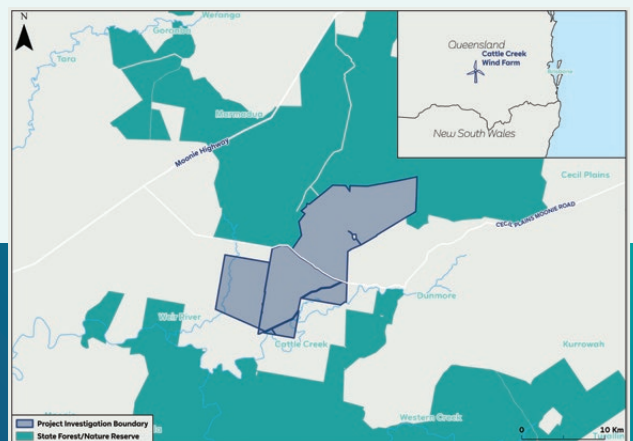
Project status: Planning and approvals, seeking community feedback, undergoing extensive studies



Start of **construction** planned for 2027
Estimated 3-4 year construction period



Targeting 2029 for initial **operations**
Expected to be fully operational in **2030**



Cattle Creek
Wind Farm

RWE

cattlecreekwindfarm.com.au



Supporting your community

Apply for Community Sponsorship

We have established a sponsorship fund of \$100,000 per calendar year to support community groups and events in Cattle Creek, Dunmore, Weir River, Cecil Plains, Moonie and surrounds during the planning and approvals phase of the project.

We welcome funding submissions from not-for-profit organisations including sporting and recreational clubs, charities, community volunteer groups, parent groups, playgroups, environmental organisations, aged and/or disability support, event organising committees, community-led development groups and business chambers.

If you are part of a community or non-profit group, we want to hear from you. We are meeting with community groups to understand their needs and welcome your feedback.

If your group could benefit from sponsorship, please contact the team to arrange a meeting on:

 **1800 867 077**

 **cattlecreekwindfarm@rwe.com**

More than

\$81K

already
allocated

Sponsorship distributed to date includes:

\$6,000 St Joseph's School, Millmerran

\$16,000 Cecil Plains Golf Club

\$15,000 Cecil Plains Progress Tourism
Recreation Association Inc.

\$12,800 Cecil Plains History Group Inc.

\$16,000 Cecil Plains Tennis Club Inc.

\$10,000 Little Country Kids Club Inc.

\$5,000 Lions Club of Cecil Plains

\$500 Millmerran Collective



How to apply

If you would like to apply for sponsorship, scan the QR code and download the application form from the website, or visit **cattlecreekwindfarm.com.au**.



Have your say on the Community Benefit Fund

RWE will establish a Community Benefit Fund of an expected \$500,000 per year – equating to about \$17.5 million across the operational life of the wind farm – once the project moves into the construction phase.

This fund is expected to be administered by a local community committee, who will be responsible for deciding how the money is spent.

In other communities, funds have supported initiatives including new uniforms for sporting clubs, through to medical equipment for rural hospitals.

We want to hear your suggestions about how this fund can make a positive difference to your community.

To have your say, contact the team as outlined on the back page of this newsletter.



A wind farm's lifecycle

Developing a wind farm in Australia requires extensive studies, assessments and engagement with stakeholders before submitting a planning application, which is tailored to the relevant state's planning process. This infographic outlines the stages of a wind farm, from site selection to decommissioning.

1 Site selection

Generally 6-18 months

Factors that need to be considered when selecting a site include:

- Wind resource
- Grid connection (distance and connection point)
- Population density

2 Project feasibility

Generally 6-18 months

This incorporates:

- Wind monitoring to determine strength and the site's viability
- Consideration of social and environmental factors
- Developer meetings with potential host landowners to inform and sign land use contracts
- Initial studies

The project generally becomes public knowledge during this stage or the next.

6 Decommissioning

Several months to years, depending on the project size

Options at the end of a wind farm's life include:

- Remove infrastructure and return land to prior state or a state desired by the landowner (this is RWE's responsibility)
- Extend the operating lifespan through the relevant planning pathway
- Incorporate modern wind farm technology



We are here

3 Planning and approvals

Can be up to several years

Extensive studies, reports, and community and stakeholder feedback help shape the project that is submitted to the required planning authorities. If approvals are received, RWE will seek goods and services providers, and create job opportunities.

5 Commissioning and operations

A wind farm can operate between 25 and 35 years

Commissioning begins when the first turbines are built and continues until all turbines are operational – delivering clean, green power. A community benefit fund, administered by a community committee, and a permanent workforce are implemented during operations.

4 Construction

Dependent on the project size, but usually 18 months to 3 years

Larger wind farms (more than 60 turbines) may be built in stages. Turbines are often operational once constructed, even if construction of the overall project is ongoing. Community updates continue in this stage and benefit sharing programs are finalised or sometimes become operational.

How will the proposed project fit into your community?

Share your views to help shape the Cattle Creek Wind Farm's Social Impact Assessment

RWE Renewables Australia has engaged Attexo to carry out an independent Social Impact Assessment (SIA) for the proposed Cattle Creek Wind Farm project.

A SIA gathers local perspective from project communities and other stakeholders and uses this information to identify how the planned project may alter the social environment.

As part of this process we want to hear from you; what matters most to you, and how you see this project fitting into your community. We will be seeking your input on matters such as:

- What you value most about your community
- Your community's needs
- Accommodation options during project construction
- Local employment opportunities
- Traffic and road impacts

Your insights will help ensure the assessment reflects local values and perspectives.

Attexo will also be reaching out to community groups and businesses as part of this process.

Have your say!

To share your views, simply scan the QR code or visit www.surveymonkey.com/r/CattleCreek_SIA to complete the survey.



Prefer a paper version?

Email your name and postal address to cattlecreek_SIA@attexo.com.au and Attexo will send you a hard copy survey with a reply-paid envelope.

Thank you for being part of this conversation, your voice matters.

Thank you

Thank you to everyone who attended our **community drop-in sessions at the Cecil Plains Golf Club** in March. During that time we shared the preliminary project layout and detailed information about the studies being undertaken as part of the State Government's Development Application process. You can find the poster booklet from the drop-in sessions at our website.

Recently we attended one of Queensland's largest field days, **Farmfest, at Toowoomba**. The three-day event saw more than 250 people visit our booth, with conversations around renewable energy, potential job opportunities, community benefits and general enquiries about the project. We look forward to visiting again next year!



Find out more

If you would like more information on the project please reach out via:



1800 867 077



cattlecreekwindfarm@rwe.com



Scan the QR code to
Join our mailing list

Cattle Creek
Wind Farm

RWE

cattlecreekwindfarm.com.au