

# Cattle Creek Wind Farm

Newsletter  
Edition 2, March 2025

RWE Renewables Australia is continuing to work on developing a renewable energy project near Cattle Creek.

The project is proposed for farmland at the western boundary of the Toowoomba Regional Council and eastern boundary of the Western Downs Regional Council. It is planned to include about 140 turbines and will also incorporate a battery energy storage system (BESS).

Since we shared details of the proposal in May, work has been underway on a variety of specialist studies, which are required as part of the planning process. These include subjects such as flora and fauna, construction management (including accommodation and traffic), landscape and visual impact and more.

We have also installed a meteorological (met) mast on the site, which provides data on wind patterns at height. Met masts are part of all wind farm developments. Background noise monitoring has also been conducted at a number of locations around the proposed project, and will be shared with near neighbours in the coming weeks. Further information will be available at our upcoming community drop-in sessions.

These sessions will be held at the Cecil Plains Golf Club on March 26 and 27, where details will be shared around the studies which have been undertaken to support the Development Application, as well as additional project information. More information can be found on page four of this newsletter.

As always, if you have any queries prior to the drop-in sessions, please don't hesitate to reach out via our tollfree number or email.

**Alex Barker**  
Project Lead – Cattle Creek Wind Farm

*RWE Renewables Australia respectfully acknowledges the Bigambul people, the Traditional Owners of the lands where the Cattle Creek Wind Farm is proposed, and pay our respect to their Elders, past, present and emerging.*

## Find out more

1800 867 077

cattlecreekwindfarm@rwe.com



Scan the QR code to  
Join our mailing list

## At a glance



About **140 wind turbines** with a tip height of up to 270m



**Located** about 50km north-west of Millmerran. The area is predominantly used for cattle grazing



Site investigation area of about **20,000 hectares**, with an expected operating footprint of less than 5% of this land



Installed capacity of about **1,000 megawatts (MW)**



More than **525,000 Queensland homes powered**



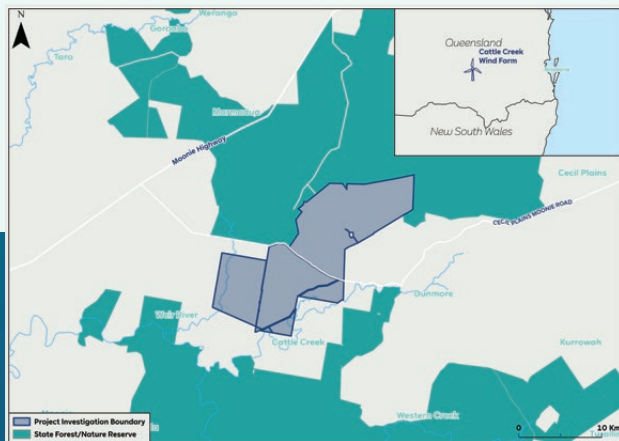
**Project status:** Planning and approvals



Start of **construction** planned for 2027  
Estimated 3-4 year construction period



Targeting 2028 for initial **operations**  
Expected to be fully operational in **2029**



Cattle Creek  
Wind Farm

**RWE**

cattlecreekwindfarm.com.au

# Supporting your community

## Apply for Community Sponsorship

We have established a sponsorship fund of \$100,000 per calendar year to support community groups and events in Cattle Creek, Dunmore, Weir River, Cecil Plains, Moonie and surrounds during the planning and approvals phase of the project.

We welcome funding submissions from not-for-profit organisations including sporting and recreational clubs, charities, community volunteer groups, parent groups, playgroups, environmental organisations, aged and/or disability support, event organising committees, community-led development groups and business chambers.

**If you are part of a community or non-profit group, we want to hear from you. We are meeting with community groups to understand their needs and welcome your feedback.**

If your group could benefit from sponsorship, please contact the team to arrange a meeting on:

 **1800 867 077**

 **cattlecreekwindfarm@rwe.com**

More than

**\$59K** already  
allocated

### Sponsorship distributed to date includes:

**\$15,000** Cecil Plains Progress Tourism  
Recreation Association Inc.

**\$12,800** Cecil Plains History Group Inc.

**\$16,000** Cecil Plains Tennis Club Inc.

**\$10,000** Little Country Kids Club Inc.

**\$5,000** Lions Club of Cecil Plains

**\$500** Millmerran Collective



## How to apply

If you would like to apply for sponsorship, scan the QR code and download the application form from the website, or visit **cattlecreekwindfarm.com.au**.



## Have your say on the Community Benefit Fund

**RWE will establish a Community Benefit Fund of at least \$500,000 per year – equating to about \$17.5 million across the operational life of the wind farm – once the project moves into the construction phase.**

This fund will be administered by a local community committee, who will be responsible for deciding how the money is spent.

In other communities, funds have supported initiatives including new uniforms for sporting clubs, through to medical equipment for rural hospitals.

**We want to hear your suggestions about how this fund can make a positive difference to your community.**

To have your say, contact the team or drop into an open cafe session, as outlined on the back page of this newsletter.



# Delivering benefits

## A snapshot



### Community contributions

- \$100,000 per year in community sponsorship during the planning and approvals phase of the project.
- Community Benefit Fund of at least \$500,000 per year commencing at the construction phase to support local projects and improve community connections. This Benefit Fund will equate to \$17.5 million over the operational life of the wind farm.
- Unused funds from community sponsorship program will be rolled over to the Community Benefit Fund.



### Economic impact

- Ongoing economic stimulus for the region across the proposed project's 35 years of operation.
- Up to 50 permanent jobs during the wind farm's operations.
- Up to 500 jobs at peak construction periods.
- Support for local supply chains including hospitality, trades and other suppliers.
- Rates payments to Toowoomba and Western Downs Regional Councils.



### Energy and infrastructure

- Proposed generation of electricity to power more than 525,000 homes, the equivalent of powering all private dwellings in the Toowoomba Regional Council and Western Downs Regional Council about five times over.
- Significant contribution to Queensland's Renewable Energy Targets (70% by 2032, 80% by 2035).
- Enhanced electricity security for Queenslanders.





## Engaging with you

Thank you to everyone in the community who has engaged with us to date. Your feedback is vital in shaping our ongoing assessments and decision-making processes. We look forward to continuing our collaboration as the proposed wind farm progresses.

We will soon be scheduling meetings with community groups to understand their needs in relation to funding opportunities, as outlined on page 2 of this newsletter, and gain their perspective on the community's needs. If your group could benefit, please call or email the team on **1800 867 077** or email [cattlecreekwindfarm@rwe.com](mailto:cattlecreekwindfarm@rwe.com) to arrange a meeting and provide feedback. We will continue to engage with other key project stakeholders across various methods.

We will also be engaging with local businesses and service providers from late 2025 to 2026 as part of our commitment to engaging local goods and services where possible.

Join us!

## Community drop-in sessions

***Would you like to know more about the proposed Cattle Creek Wind Farm?***

We are holding Community drop-in sessions in March and invite you to call in to say hello, view the preliminary project layout and learn more about the studies that are being undertaken as part of the Development Application process.

Please drop in to see us at:



**Cecil Plains Golf Club**

Dalby-Cecil Plains Road  
Cecil Plains, Queensland



**Wednesday, 26 March 2025**  
2pm to 7.30pm



**Thursday, 27 March 2025**  
7.30am to 2pm

### Find out more



1800 867 077



[cattlecreekwindfarm@rwe.com](mailto:cattlecreekwindfarm@rwe.com)



Scan the QR code to  
Join our mailing list

Cattle Creek  
Wind Farm

**RWE**

[cattlecreekwindfarm.com.au](http://cattlecreekwindfarm.com.au)