

Campbells Bridge Wind Farm

Newsletter
Edition 3, April 2025

Project update

RWE Renewables Australia is continuing to work on the development of a wind farm at Campbells Bridge.

Since our last newsletter, we have continued conducting specialist studies that are a key part of the planning and approvals stage, focusing on flora and fauna. These studies can take several years, often requiring ecological surveys in different seasons over multiple years. Further information about the process of developing a wind farm and the time involved, can be found on page 2 of this newsletter.

We will continue progressing studies in areas such as ecology and landscape, visual impact and noise modelling – all critical to understanding the local environment. In the second half of 2025 we plan to submit referrals under the *Victorian Government Environmental Effects Act* (EE Act) and *Federal Government Environmental Protection and Biodiversity Conservation* (EPBC) Act. These referrals will result in scoping guidance for the project, which will inform a further round of detailed studies. The findings from these studies will support the planning application, expected to be submitted in 2026. It is likely that an Environment Effects Statement (EES) will be prepared and exhibited in 2026.

The project's timelines have changed to align with the Western Renewables Link (WRL) timeframes – a proposed major transmission line between Bulgana and the existing Sydenham Terminal Station site. The Campbells Bridge Wind Farm is expected to connect to the WRL via the Bulgana substation. The route for the transmission line required to connect the wind farm to the Bulgana substation is still under consideration. Throughout 2025, RWE will work through possible scenarios and engage with the community and other key stakeholders to gather feedback on potential options.

We invite you to call in to our shop front at 92 Main Street in Stawell, which is open on Tuesdays from 10am to 5:30pm or by appointment.

Kind regards,

Campbells Bridge Wind Farm project team

At a glance



About 145 *wind turbines* with a tip height of about 250m



Located about 15km north-west of Stawell, 11km south of Rupanyup, more than 3km from Glenorchy and Callawadda.

The area is predominantly farmland used for cropping or grazing, which can continue if the wind farm is constructed



Local Government Area: Northern Grampians Shire Council and Yarriambiack Shire Council



Site investigation area of about *14,000* hectares, with a smaller project area to be refined



More than *30 landholders*



Installed capacity of about 1,000 megawatts (MW)



About *500,000 homes powered*



Project status: Planning and approvals



Proposed *connection* being explored. Electricity Network Connection investigation and strategy development underway



Targeting 2030 for *operations*

Speak with us

We value your feedback and are committed to listening and responding to your questions and comments about the Campbells Bridge Wind Farm. Please contact us or visit our website.

T: 1800 298 624 **E:** campbellsbridgewindfarm@rwe.com
campbellsbridgewindfarm.com.au

**Campbells Bridge
Wind Farm**

RWE



A wind farm's lifecycle

Developing a wind farm in Australia requires extensive studies, assessments and engagement with stakeholders before submitting a planning application, which is tailored to the relevant state's planning process. This infographic outlines the stages of a wind farm, from site selection to decommissioning.

1 Site selection

Generally 6-18 months

Factors that need to be considered when selecting a site include:

- Wind resource
- Grid connection (distance and connection point)
- Population density

2 Project feasibility

Generally 6-18 months

This incorporates:

- Wind monitoring to determine strength and the site's viability
- Consideration of social and environmental factors
- Developer meetings with potential host landowners to inform and sign land use contracts
- Initial studies

The project generally becomes public knowledge during this stage or the next.

3 Planning and approvals

Can be up to several years

Extensive studies, reports, and community and stakeholder feedback help shape the project that is submitted to the required planning authorities. If approvals are received, RWE will seek goods and services providers, and create job opportunities.

6 Decommissioning

Several months to years, depending on the project size

Options at the end of a wind farm's life include:

- Remove infrastructure and return land to prior state or a state desired by the landowner (this is RWE's responsibility)
- Extend the operating lifespan through the relevant planning pathway
- Incorporate modern wind farm technology

5 Commissioning and operations

A wind farm can operate between 25 and 35 years

Commissioning begins when the first turbines are built and continues until all turbines are operational – delivering clean, green power. A community benefit fund, administered by a community committee, and a permanent workforce are implemented during operations.

4 Construction

Dependent on the project size, but usually 18 months to 3 years

Larger wind farms (more than 60 turbines) may be built in stages. Turbines are often operational once constructed, even if construction of the overall project is ongoing. Community updates continue in this stage and benefit sharing programs are finalised or sometimes become operational.





Planned activities for 2025

Investigating the project site

Since our last community newsletter, we have progressed several studies required for our planning submission.

- Flora and fauna studies have continued, with two years completed to date. These surveys guide the layout of the wind farm according to the principle of avoiding, minimising, and offsetting impacts. Further assessments are ongoing to ensure high-quality habitats are buffered wherever possible.
- Cultural heritage investigations have started, allowing us to identify and protect indigenous and non-indigenous cultural heritage. This involves desktop research and walking transects across the site to detect potential artifacts or elements of cultural significance. We will continue consulting on these topics throughout 2025 with a view to finalising a Cultural Heritage Management Plan next year.
- We have undertaken a transport route assessment to determine potential routes to transport turbine components from port to site. The Port of Geelong and the Port of Portland are being considered.
- A preliminary Landscape and Visual Impact Assessment has been completed to evaluate the wind farm's impact on visual and cultural qualities.
- A preliminary noise assessment is underway to evaluate potential noise levels and ensure the project is compliant.
- We will share the findings of these studies once they are completed and submitted through the permitting process.

This year we will work through our options to connect the proposed project to the grid while continuing our ecological studies.

We will continue to operate our shopfront at 92 Main Street in Stawell, which is open on Tuesdays from 10am to 5:30pm, and will provide updates through newsletters and meetings.

We are planning to release our next newsletter in six months, but will share information earlier if needed, as we progress through developing our referral submissions.

Background noise monitoring and landscape and visual impact assessments will be available to neighbouring properties, although this is now scheduled for 2026. If you would like to be involved, please reach out via email or call 1800 298 624 to register your interest.

We are here



Pre-2022

Site selection



2022 - mid 2023

Project feasibility



2024 - 2025

Preliminary site studies



Late 2025

Planning referral



2026

EES preparation and submission



2029 - 2030

Construction



2030

Commissioning

Sponsorship fund applications open

In line with RWE's commitment to share benefits with the communities where our projects are based, we have a \$100,000 per year sponsorship fund for the Campbells Bridge Wind Farm.

The sponsorship fund commenced in 2023 and will be available each year of the planning and approvals stage. We welcome funding submissions from not-for-profit clubs such as sporting and recreational clubs, charities, community volunteer associations and groups, including parent groups, playgroups, environmental organisations, aged and/or disability support, community committees including event organising committees, community-led development committees, and business chambers.

Preference will be given to initiatives located within 30 kilometres of the proposed Campbells Bridge Wind Farm project site.

The fund has already distributed more than \$130,000 to local community initiatives.

Apply for Community Sponsorship

If you are part of a community or non-profit group, we want to hear from you!

If your group could benefit from sponsorship, please contact the team to arrange a meeting on:

 1800 298 624

 campbellsbridgewindfarm@rwe.com

More than

\$130K already allocated

RWE has supported the below community organisations since 2023:

2025

\$10,000	Grampians Field and Game
\$8,992.50	Stawell Secondary College
\$5,000	Great Western Primary School
\$2,000	Marian College

2024

\$11,000	Stawell Harness Racing Club - Blues Festival
\$10,000	Murtoa College
\$10,000	Stawell Gold Club
\$5,370	Stawell Pioneers Soccer Club
\$5,000	Murtoa Events – Murtoa New Years Eve by Lake Marma 2024
\$5,000	Murtoa Agricultural and Pastoral Society Inc.
\$2,000	Glenorchy Good Friday Appeal
\$1,216	Stawell Bowling Club
\$250	Glenorchy Golf Club Opening Day

2023

\$25,000	Rupanyup Primary School
\$9,000	Glenorchy Golf Club mower
\$7,975	Rupanyup Football Netball Club electronic scoreboard
\$6,000	Callawadda-Stawell Clay Target Club
\$5,000	Murtoa Agricultural & Pastoral Society Annual Show
\$2,000	Campbells Bridge Hall Progress Association
\$2,000	Glenorchy Memorial Hall
\$1,000	Glenorchy Good Friday Appeal



How to apply

If you would like to apply for sponsorship, scan the QR code and download the application form from the website, or visit: campbellsbridgewindfarm.com.au

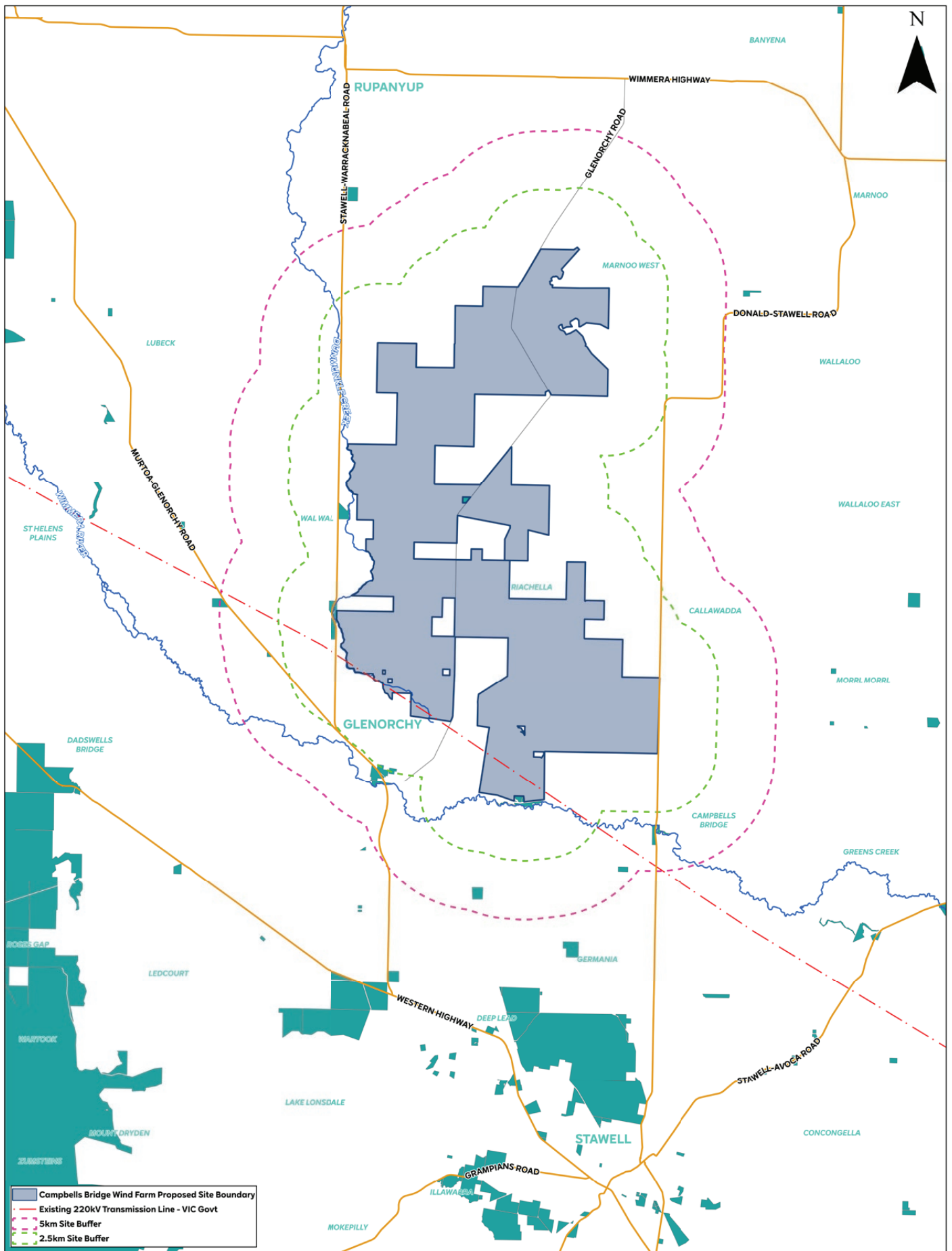
T: 1800 298 624

E: campbellsbridgewindfarm@rwe.com

campbellsbridgewindfarm.com.au

Campbells Bridge
Wind Farm

RWE



RWE

DISCLAIMER/CONSENT
The information contained within this report is for the use of the client only. It is not to be used for any other purpose without the written consent of RWE Renewable Australia. RWE Renewable Australia does not warrant the accuracy or completeness of the information contained herein. RWE Renewable Australia does not accept any liability for any loss or damage arising from the use of this information. RWE Renewable Australia is not responsible for any loss or damage arising from the use of this information. RWE Renewable Australia is not responsible for any loss or damage arising from the use of this information.

Campbells Bridge Wind Farm

Proposed Site Boundary

0 5 Km

Produced By: JW

31/07/2024

About RWE

RWE is one of the world's leading producers of renewable energy and operates a global portfolio of about 19 gigawatts (GW) of renewable wind, solar and battery storage projects.

In addition, there are various renewable energy projects under construction in multiple countries throughout the world, totalling about 12 GW.

The RWE Group has been present in Australia since 2013. In 2018 it began construction of one of the country's largest solar farms – the 249 megawatt (MW) Limondale Solar Farm in New South Wales (NSW) and has been operating it ever since.

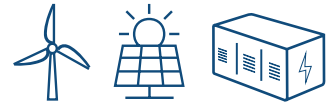
RWE is now developing an exciting portfolio of wind, solar and battery storage projects across Australia. Our growing team of about 80 people – largely based in Victoria and Queensland – is backed by the experience of RWE Renewables' 5,300 strong team across the European, North American, and Asia Pacific regions.

We have a planned gross investment in Australia of \$6 billion, to develop up to 3 GW of onshore wind, solar and battery projects across multiple states.

Our Limondale project is one of the country's largest solar farms. We have built a strong relationship with the Balranald community and were chosen to deliver and operate Australia's first eight-hour battery within the existing project site through New South Wales' first Long-Term Energy Service Agreements tender process. This project is currently under construction and commissioning is planned for late 2025.

Global portfolio
of about

19 GW



A further 12 GW of global renewable energy projects under construction

RWE has a strong focus on working with and making positive contributions to the communities where our projects are based, as well as being a key driver of Australia's energy transition.

We are committed to fostering transparent and lasting relationships with stakeholders, with particular consideration for local communities and landowners. Our business model is to develop, own and operate renewable energy projects and we look forward to working with your community.



Find out more about our Australian projects at
au.rwe.com

Engagement hub in Stawell

The Campbells Bridge Wind Farm Engagement Hub is open at 92 Main Street in Stawell on Tuesdays from 10am to 5:30pm or by appointment.

It's a great opportunity for you to chat with our project team to learn more about the project and provide your feedback. On occasion, technical specialists will be present to provide information on their areas of expertise. We look forward to welcoming you.



Join our mailing list

To subscribe to project updates and stay up to date, scan QR code or contact the team

T: 1800 298 624

E: campbellsbridgewindfarm@rwe.com

campbellsbridgewindfarm.com.au

**Campbells Bridge
Wind Farm**

RWE